

XENONnT + DARWIN

Explore the invisible

Contacts:

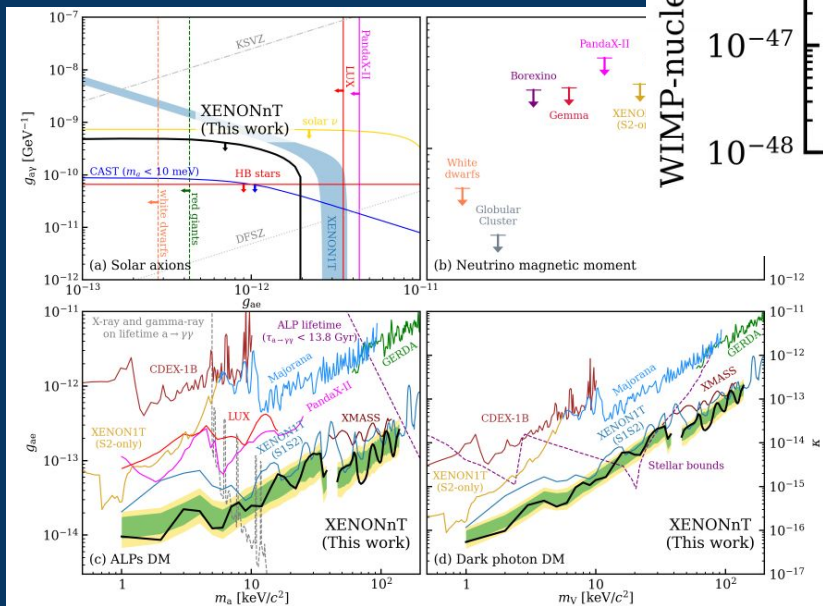
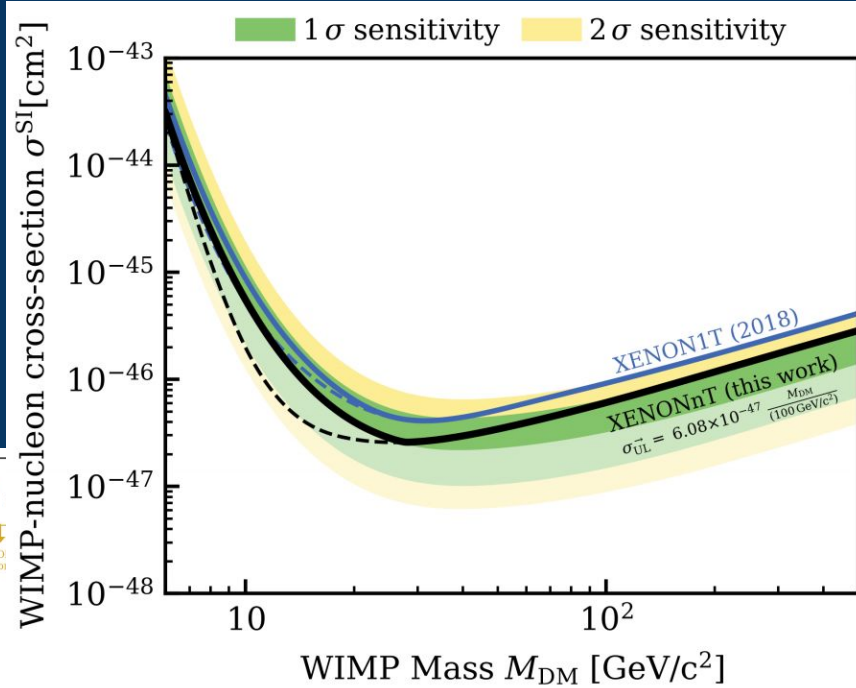
marcello.messina@lngs.infn.it

alfredo.ferella@aquila.infn.it



QUEST

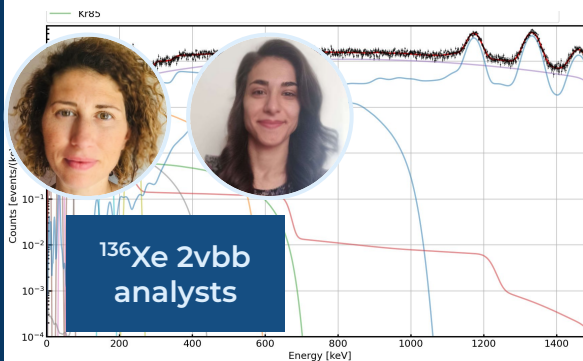
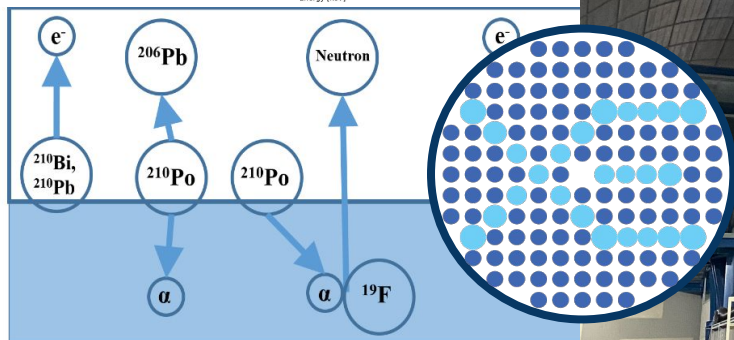
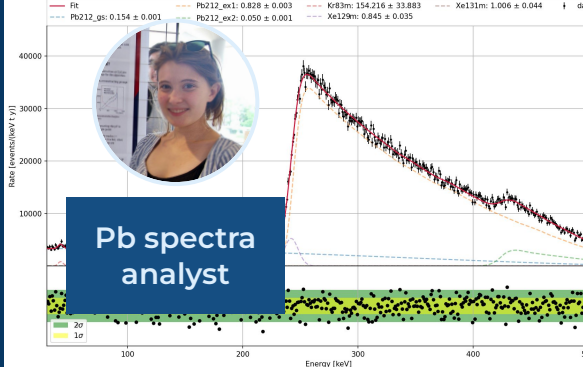
Dark matter direct observation



New-physics searches



XENON



Technical coordinator



Run coordinator



Cryogenic expert



DAQ expert



nVeto expert

Random shifter

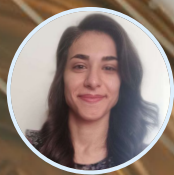
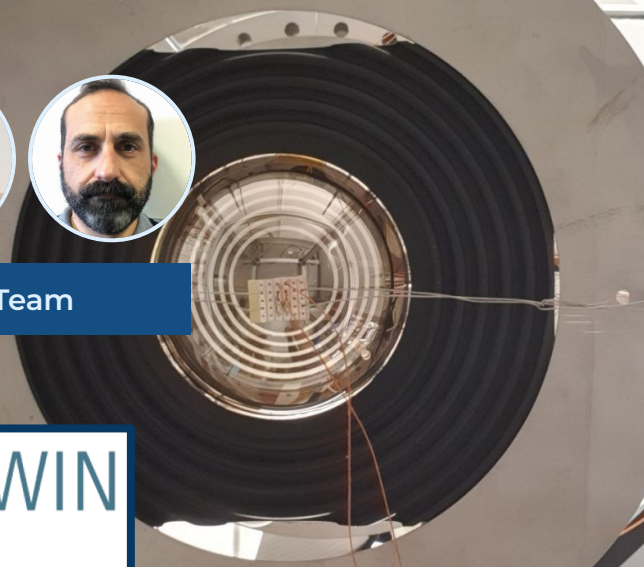
nVeto expert



D A R W I N



Photosensors Team



Electrodes Investigators



JOIN!



Hardware

ABALONE

SiPMs

Electrodes



S2 only

Sub-Gev DM

Migdal effect

Supernova
Grav. Waves

Low E ER

Solar pp ν

^{124}Xe $0\nu\text{ECEC}$

Solar axions

NR

8B CE ν NS

Mirror DM

SI-SD WIMPs

High E ER

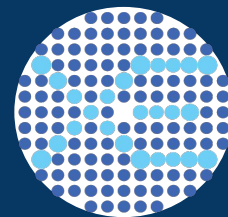
^{136}Xe $\beta\beta$

^{134}Xe $\beta\beta$

Millicharged
particles

Hardware

nVETO



It is only in the heart of the mountain that one can see rightly;
What is fundamental in physics is invisible to the eye.*

Edited from Antoine de Saint-Exupéry, The Little Prince



***but not to a very low
background detector**